

TMAXTECH[®]
OUTDOOR POWER EQUIPMENT

PRODUCT CATALOG



DOMINATE
THE OUTDOORS
FEEL THE POWER



CORE VALUE

- Innovation
- Passion
- Reliability
- Client Loyalty



TMAXTG[®]
OUTDOOR POWER EQUIPMENT

CONTENTS

COMPANY INTRODUCTION

Company Profile	07
Vision	08
Our Sales	10
Quality Assurance	11

PRODUCTS

R&D and New Products	13
Petrol Chainsaws	17
Brush Cutters	26
Petrol Multi-tools	41
Hedge Trimmers	45
Earth Augers	48
Tiller	51
Blowers	54
Petrol Portable Concrete Vibrator	59

ACCESSORIES

Brush Cutters Accessories	62
Chainsaws Accessories	63

Exploding View

Chainsaw	66
Brush Cutter	68







COMPANY INTRODUCTION

BRAND STORY



Jinhua TeammaxTool Manufacture Co., Ltd. specializes in producing various types of gardening products, which mainly include brush cutters, chain saws, hedge trimmers and forestry machinery, and more. Our products are widely used in home garden, public parks, sporting fields, golf courses, and green belt undeveloped, wild, or agricultural land. With an enriched product portfolio of features, sizes and uses, we can satisfy our clients requirements in the work force or at home. The multifunction of our products and innovative designs, render our products more comfortable with high efficiency, making a safe and effective outdoor product experience.

Due to years of dedication and perseverance, we have formed a differentiated competitive edge. 'Our commitment to total customer solutions.' TmaxTool's total customer solutions are supported by our innovative designs, powerful production facilities, professional management teams and conscientious services. Our products are environmentally friendly and cost efficient characterized by low emission, low oil consumption, low noise and effective damping effects with an optimum combination of price and performance. Before a sale, we always address our customers' expectations and requirements. From these requirements our service professionals will match or create the best suitable products for their purchase. We will review the order multiple times, leaving no room for error. During our after-sales process, we will trace the feedback from our customers' comments and concerns to make improvements and ultimate better products. Consequently, we have a renowned reputation among our loyal customers throughout Europe, Oceania, South America and the Middle East.

CORPORATE VISION

“ To be the leading expert of garden tools manufacture in China. ”





BRAND PHILOSOPHY

Passion & ingenuity
Behind every product we
Manufacture.



BRAND MISSION

To create a safe,
Reliable & easy outdoor
Power tool experience.

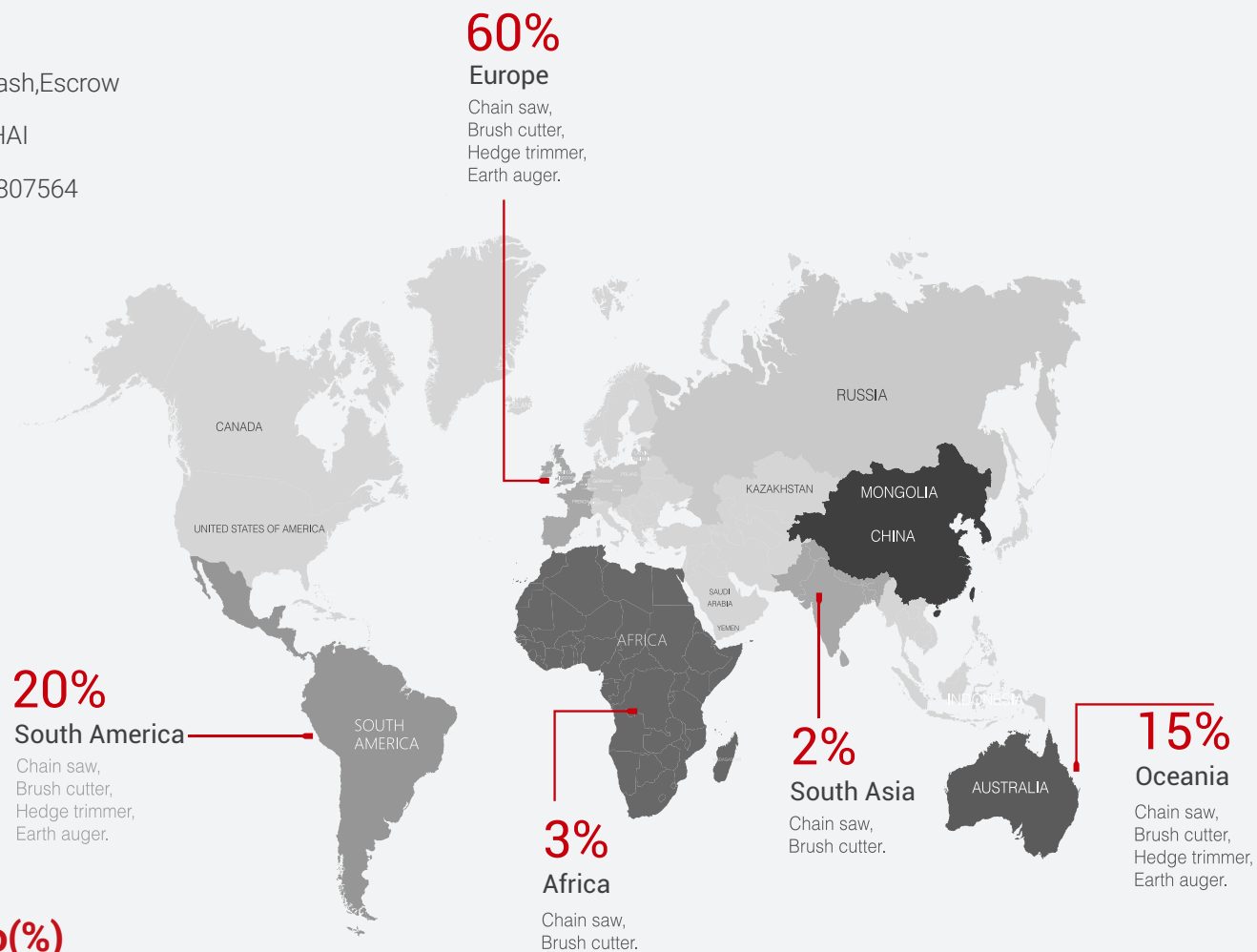


CUSTOMER MINDSET

High quality outdoor
Power tools with the
Service to match.

OUR SALES

- Average lead time : 35 days
- Payment term : T/T,LC,Paypal,Cash,Escrow
- Nearest Port : NINGBO,SHANGHAI
- Our export License number : 00807564



Main Market sales ratio(%)

QUALITY ASSURANCE



- Most of the major parts are made inside our company to facilitate quality control and new product development .
- Over 90% of our product are TUV certified .
- All members of our employees have been well trained to ensure that the company is operated exacting ISO 9001 to match or exceed our customers' expectations .





PRODUCTS

A vertical stack of cut logs, showing the circular cross-sections of the wood, with varying shades of brown and tan.

R&D AND NEW PRODUCTS



EURO V

The optimization of Euro V's emission technology and safety. our products conform to EURO V emission with mature technology to help our customers build an environmental friendly society.



300 hours long life time

New design brush cutters and chain saws for professional use, the lifetime more than 300 hours.



Mini chainsaws

For home use and tree pruning. The world's lightest, compact and powerful.



The safety brake system for chainsaw.

R&D AND NEW PRODUCTS

TM4500-3

EURO V

Engine displacement 45cc	Maximum engine power 1.7KW
Weight 7kg	Sprocket wheel 0.325"



TMBBC650-6

EURO V

Engine 1E48F	Power 2.3KW
Displacement 65cc	Shaft diameter 28mm

TM1800CV **NEW**

Engine displacement 18.3cc	Maximum engine power 0.6KW
Weight 2.2kg	Sprocket wheel 1/4"



TM2500-2 **NEW**

Engine displacement 25.4cc	Maximum engine power 0.75KW
Weight 3.85kg	Sprocket wheel 3/8"



Brake with double brake More secure.
more reliable, brake in short time.



The safety brake system for chainsaw.



TMAXTECH
OUTDOOR POWER EQUIPMENT
TM4500-3

TMAXTECH
OUTDOOR POWER EQUIPMENT



PETROL CHAINSAWS

The professional choice of
power and reliability

With the continual challenge for the innovative technology, TMAXTOOL offers not more than the word lightest chainsaw, but performance oriented powerful chainsaws. Combining the efficiency, reliability and durability in our feature, you will find the best solution for the various needs.

PETROL CHAINSAWS



Teammax Series



TM1800

- ▶ TMAXTOOL top-handle saws are very easy to handle in its well balanced body. The light weight and compact design gives perfect operability for the tree care users.
- ▶ For pursuing the safety of the professional tree-service workers who often start a chainsaw at the head of a ladder or a tree.



TM1800CV

TM1800 | TM1800CV



Engine displacement 18.3CC	Guide bar type Sprocket nose/Carving
Maximum engine power 0.6KW	Chain bar length 203mm(8")
Fuel tank capacity 170ml	Weight 2.2kg
Oil tank capacity 160ml	Sprocket wheel 1/4"

Teammax Series

- TMAXTOOL robust chainsaws are designed to endure the tough conditions and severe environments. These saws deliver more power and extra durability , as well as the quick maintenance feature within the machine .
- For pursuing the safety of the professional tree-service workers who often start a chainsaw at the head of a ladder or a tree.



TM2500



TM2500 | TM2500CV



Engine displacement 25.4CC	Guide bar type Sprocket nose / Carving
Maximum engine power 0.75KW	Chain bar length 255mm(10") 300mm(12")
Fuel tank capacity 230ml	Weight 3.85kg
Oil tank capacity 160ml	Sprocket wheel 3/8" / 1/4"



TM2500CV

Teammax Series



TM3800 | TM4100



TM4500 | TM4600

TM3800 | TM4100
TM4500 | TM4600



Engine displacement 37cc/42.2cc/45cc/46cc	Guide bar type Sprocket nose
Maximum engine power 1.2kW/1.3kW/1.7kW/1.6kW	Chain bar length 405mm(16")/455mm(18")
Fuel tank capacity 310ml/550ml	Weight 6.0kg/7.0kg
Oil tank capacity 210ml/260ml	Sprocket wheel 3/8" / 0.325"

Teammax Series



TM5200



TM5800 | TM6150

TM5200
TM5800 | TM6150
TM6200 | TM7200



Engine displacement 49.3cc/54.5cc/63.3cc /62cc /71.5cc	Guide bar type Sprocket nose
Maximum engine power 1.8KW/2.2KW/2.4KW/2.6KW/3.5KW	Chain bar length 505mm(20") /555mm(22") / 605mm(24")
Fuel tank capacity 550ml/670ml	Weight 7.5kg /9.0kg
Oil tank capacity 260ml/350ml	Sprocket wheel 0.325" / 3 / 8"



TM6200 | TM7200

Elite Series

NEW



TM2500-2

- TMAXTOOL top-handle saws are very easy to handle in its well balanced body. The light weight and compact design gives perfect operability for the tree care users.
- For pursuing the safety of the professional tree-service workers who often start a chainsaw at the head of a ladder or a tree.



TM2500CV-2

TM2500-2 | TM2500CV-2



Engine displacement 25.4cc	Guide bar type Sprocket nose / Carving bar
Maximum engine power 0.75KW	Chain bar length 255mm(10") 300mm(12")
Fuel tank capacity 230ml	Weight 3.85kg
Oil tank capacity 160ml	Sprocket wheel 3/8" / 1/4"

Elite Series



TM3800-3 | TM4100-3



TM3800-3 | TM4100-3
TM4500-3 | TM5200-3 | TM5800-3 | TM6150-3

Engine displacement 37cc/42.2cc/45cc/49.3cc/54.5cc/63.3cc	Guide bar type Sprocket nose
Maximum engine power 1.2KW/1.3KW/1.7KW/1.8KW/2.2KW/2.4KW	Chain bar length 405mm(16") /455mm(18") /505mm(20")
Fuel tank capacity 310ml /550ml	Weight 6.0kg/7.0kg /7.5kg
Oil tank capacity 210ml/260ml	Sprocket wheel 3/8" /0.325"



TM4500-3 | TM5200-3 | TM5800-3 | TM6150-3

Pro Series



TM3800-4 | TM4100-4

▶ TMAXTOOL compact professional saws are designed for forest professionals, exacting demands of high performance, productivity and durability.



TM4500-4 | TM5200-4 | TM5800-4 | TM6150-4

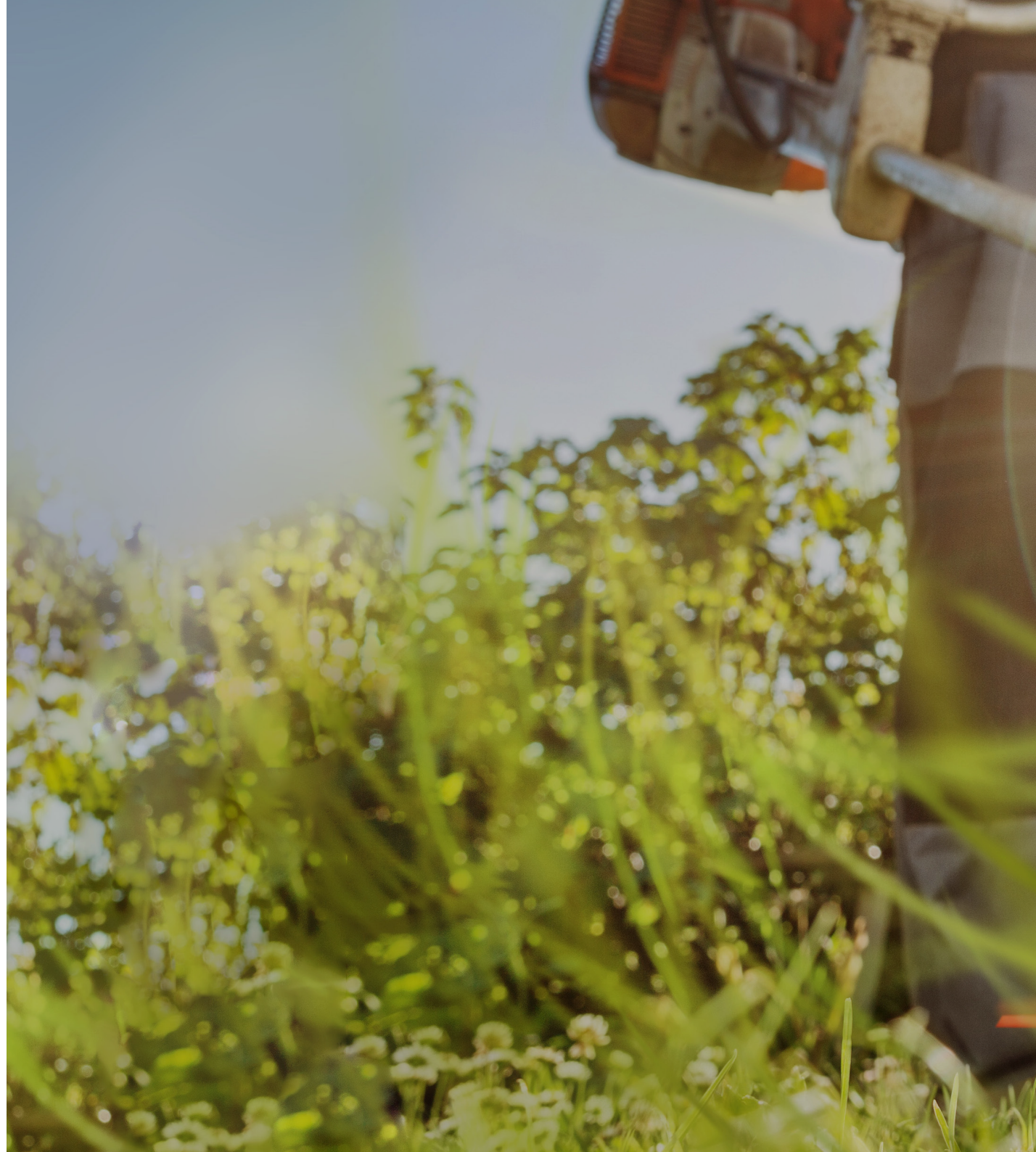


TM3800-4 | TM4100-4
TM4500-4 | TM5200-4 | TM5800-4 | TM6150-4

Engine displacement 37cc/42.2cc/45cc/49.3cc/54.5cc/63.3cc	Guide bar type Sprocket nose
Maximum engine power 1.2KW/1.3KW/1.7KW/1.8KW/2.2KW/2.4KW	Chain bar length 405mm(16") /455mm(18") /505mm(20")
Fuel tank capacity 310ml /550ml	Weight 6.0kg/7.0kg /7.5kg
Oil tank capacity 210ml/260ml	Sprocket wheel 3/8" /0.325"

BRUSH CUTTERS

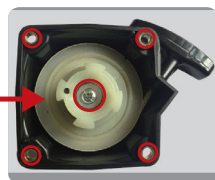
TMAXTOOL Grass trimmers , brushcutters & clearing saws quickly tame long grass and undergrowth . The machines are fitted with cutting tools to cater for jobs from mowing small areas of grass and edges to thinning out overgrown thickets . Teammax engines produce significantly less emissions than conventional two-stroke engines , giving you increased fuel efficiency with less impact on the environment .





BRUSH CUTTERS

➤ TMAXTOOL trimmers and brushcutters are designed to provide you with a reliable engine that has low vibration and low noise.



Easy start system metal parts inside make the starter with long life time



Tool-less handle adjustment

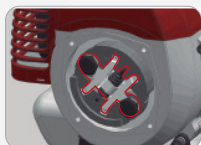
Multi-function handle Easy to operate can be controlled with just one hand

7pcs oil bearing inside the shaft



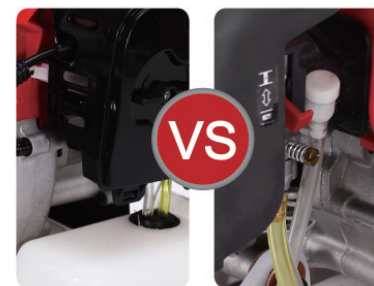
Handle thickness
1.5mm VS 1.2mm

6-point anti-vibration system



Clutch plate

To reduce the clutch deflection and vibration



NEW CHOCK LEVEL WORLD CLASS DESIGN QUALITY AND CONSTRUCTION

Teammax Series



TMBC260SA

- Ideal for home gardens.
- Perfect for mowing small areas of grass and trimming lawn edges.
- Easy to start.
- Lightest petrol grass trimmer.
- Loop handle.



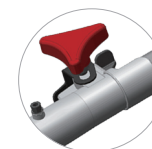
TMBC260SA



Engine TMBC1E34F	Shaft diameter 26mm
Displacement 25.4cc	Belt Single belt
Power 0.7KW	Handle Loop handle
Cutting diameter 380mm	Blade Nylon cutter

Teammax Series

- For comfortable operation.
- where space is limited.
- For mowing large areas of grass.
- High-performance with.
- Various cutting tools.



Detachable shaft

TMBC260A



Detachable shaft

TMBC305B

TMBC260A | TMBC305B



Engine TMBC1E34F/TM1E36F	Shaft diameter 26mm
Displacement 25.4cc/32.6cc	Belt Single belt
Power 0.7KW/1.0KW	Handle Double Bicycle handle/Loop handle
Cutting diameter 255mm /415mm	Blade Nylon cutter & metal blade

Teammax Series



Detachable shaft

TMBC415 | TMBC520



Detachable shaft

TMBC720B

➤ TWO-STROKE ENGINE
environment friendly, low emission four cycle engine.



TMBC415 | TMBC520
TMBC720B



Engine TM1E40F-5/1E44F /1E50F	Shaft diameter 28mm/26mm
Displacement 42.7cc /51.7cc/72.6cc	Belt Single belt /Super belt
Power 1.25KW/1.6KW/2.5KW	Handle Double Bicycle handle/Loop handle
Cutting diameter 255mm /415mm	Blade Nylon cutter & metal blade

ELITE Series

- Robust, dependable, powerful.
- Ideal for mowing large areas of long grass.
- Also perfect for clearing weeds, tree cultivation, overgrown thickets and bushes.



TMBC415-4 | TMBC520-4
TMBC620-4 | TMBC650-4



Engine TM1E40F-5/TM44F/1E47.5F /1E48F	Shaft diameter 28mm/26mm
Displacement 42.7cc / 51.7cc / 62cc /65cc	Belt Single belt/Super belt
Power 1.25KW /1.6KW /2.1KW /2.3KW	Handle Bicycle handle/Adjustable Bicycle handle
Cutting diameter 255mm /440mm	Blade Nylon cutter & metal blade



Detachable shaft

TMBC415-4 | TMBC520-4
TMBC620-4 | TMBC650-4

Pro Series



TMBC415-6B | TMBC520-6B
TMBC620-6B | TMBC650-6B

- Robust, dependable, powerful.
- Ideal for mowing large areas of long grass.
- Also perfect for clearing weeds, tree cultivation, overgrown thickets and bushes.



TMBC415-6B | TMBC520-6B
TMBC620-6B | TMBC650-6B



Engine TM1E40F-5/1E44F/1E47.5F /1E48F	Shaft diameter 28mm
Displacement 42.7cc / 51.7cc / 62cc /65cc	Belt Single belt/Super belt
Power 1.25KW /1.6KW /2.1KW /2.3KW	Handle Double rotatable Bicycle handle
Cutting diameter 255mm /415mm	Blade Nylon cutter & metal blade

Pro Series

- For working in challenging areas of tough grass 6-point anti-vibration system.
- Easy to start.
- Multi-function bike handle with double harness.
- TEAMMAX 2 stroke engine, increased fuel efficiency with less impact on the environment.



TMBC415-6 | TMBC520-6
TMBC620-6 | TMBC650-6 | TMBC720-6

Engine TM1E40F-5/1E44F/1E47.5F /1E48F/1E50F	Shaft diameter 28mm
Displacement 42.7cc / 51.7cc / 62cc /65cc/72.6cc	Belt Super belt
Power 1.25KW /1.6KW /2.1KW /2.3KW/2.5KW	Handle Double rotatable Bicycle handle
Cutting diameter 255mm /415mm	Blade Nylon cutter & metal blade



TMBC720-6



TMBC415-6 | TMBC520-6
TMBC620-6 | TMBC650-6

Powered by
Kawasaki

Pro Series



TM350A | TM450A | TM530A

- Robust, dependable, powerful.
- Ideal for mowing large areas of long grass.
- Also perfect for clearing weeds, tree cultivation, overgrown thickets and bushes.



Reliable engine
The engine meet European and American standards

TM350A | TM450A | TM530A



Displacement 34.4cc/45.4cc/53.2cc	Shaft diameter 26mm/28mm
Power 1.2KW/1.6KW/2.0KW	Weight 9.8kg/9.9kg/10.5kg
Fuel mixture ratio 50:1	Handle Loop handle

Pro Series

Powered by
Kawasaki

- Robust, dependable, powerful.
- Ideal for mowing large areas of long grass.
- Also perfect for clearing weeds, tree cultivation, overgrown thickets and bushes.



Reliable engine
The engine meet European and American standards

TM350B | TM450B | TM530B



Displacement 34.4cc/45.4cc/53.2cc	Shaft diameter 26mm/28mm
Power 1.2KW/1.6KW/2.0KW	Weight 9.8kg/9.9kg/10.5kg
Fuel mixture ratio 50:1	Handle Bicycle handle



TM350B | TM450B | TM530B

Powered by
HONDA

Pro Series



TMGX35

- Robust, dependable, powerful.
- Ideal for mowing large areas of long grass.
- Also perfect for clearing weeds, tree cultivation, overgrown thickets and bushes.



Reliable engine
The engine meet European and American standards

TMGX35



Displacement 35.8cc	Shaft diameter 26mm/28mm
Power 1.1KW	Weight 7.5kg
Handle Nylon cutter/ Metal blade	

Pro Series

- Ideal for cutting on steep embankments , ingrown slopes , narrow ditches , vineyards or orchards .
- The weight carried on the user's back for maximum comfort via a support frame.

1. For effective , flexible mowing on embankments and slopes .
2. Perfect for vineyards , orchards and hillsides .
3. Comfortable carrying system
4. Flexible shaft



TMHV415 | TMHV520 | TMHV620 | TMHV650
TMBG415 | TMBG520 | TMBG620 | TMBG650

Engine TM1E40F-5/1E44F/1E47.5F/1E48F	Shaft diameter 26mm
Displacement 42.7cc / 51.7cc / 62cc / 65cc	Belt Super belt
Power 1.25KW / 1.6KW / 2.1KW / 2.3KW	Handle Loop handle
Cutting diameter 415mm	Blade Nylon cutter & metal blade



7 point rubber anti-vibration system



TMHV415/ TMHV520
TMHV620/ TMHV650



Detachable shaft



TMBG415 | TMBG520
TMBG620 | TMBG650

Handpush Brush cutter

- Ideal for home gardens.
- Perfect for mowing small areas of grass and trimming lawn edges.
- Easy to start.



TMBC415D | TMBC520D
TMBC620D | TMBC650D



TMBC415D | TMBC520D
TMBC620D | TMBC650D



Engine
TM1E40F-5 / 1E44F / 1E47.5F/1E48F

Shaft diameter
26mm

Displacement
42.7cc / 51.7cc / 62cc/ 65cc

Cutting diameter
255mm / 415mm

Power
1.25KW/1.6KW/2.1KW/2.3KW

Blade
Nylon cutter & metal blade





Petrol Multi-tools

The professional choice of
power and reliability

Ideal for cutting on steep embankments , ingrown
slopes , narrow ditches , vineyards or orchards .

The weight carried on the user's back for maximum
comfort via a support frame .

Petrol Multi-tools

- Lightweight multi tool trimmers for landscape professionals.
- You can select the engine units and attachments according to the purpose of use.



Petrol Multi-tools



TMM260A



TMM305

- For effective , flexible mowing on embankments and slopes .
- Perfect for vineyards , orchards and hillsides .
- Comfortable carrying system.



TMM260A / TMM305



Output power 0.7KW/1.0KW	Pole pruner bar length 10"(255mm)
Displacement 25.4cc/32.6cc	Oil tank capacity 150ml
Shaft Dia 26mm	Three teeth blade Dia 254MM
Fuel tank capacity 690ml /850ml	Hedge trimmer cutting length 395mm

Petrol Multi-tools



TMM415 | TMM520



TMM415 | TMM520

TMM415-4 | TMM520-4 | TMM620-4 | TMM650-4

Output power 1.25KW/1.6KW/2.1KW/2.3KW	Pole pruner bar length 10"(255mm)
Displacement 42.7cc/51.7cc/62cc/65cc	Oil tank capacity 150ml
Shaft Dia 26mm	Three teeth blade Dia 254MM
Fuel tank capacity 1100ml	Hedge trimmer cutting length 395mm



TMM415-4 | TMM520-4
TMM620-4 | TMM650-4

Hedge Trimmers

Exclusively designed for powerful , efficient cutting to hedges and shrubs low weight and excellent cutting performance are both key for shaping delicate ornamental and woody hedges .



Hedge Trimmers

Exclusively designed for powerful , efficient cutting to hedges and shrubs . Low weight and excellent cutting performance are both key for shaping delicate ornamental and woody hedges .

HANDLE ERGONOMICS

3 different position for easy and fatigue free working in any position.

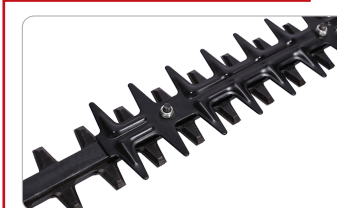


180° degree adjustable handle

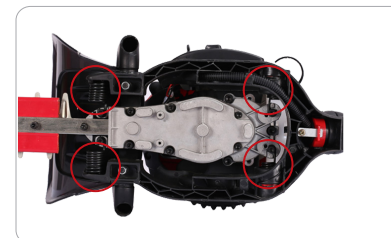
LARGE HANDGUARD



ADJUSTABLE BLADE SCREW



EXCELLENT ANTI-VIBRATION SYSTEM

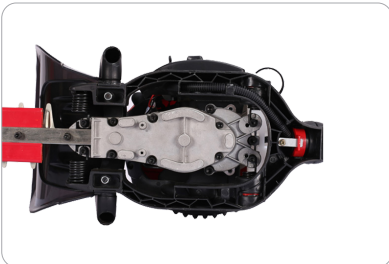


TMHT230B-2 | TMHT260B-2

Hedge Trimmers



TMHT230B | TMHT260B



TMHT230B-2 | TMHT260B-2

TMHT230B | TMHT260B
TMHT230B-2 | TMHT260B-2



Engine TMHT1E32F / TMHT1E34F	Start system Recoil
Displacement 22.5cc/25.4cc	Blade Double side blade
Power 0.65KW / 0.68KW	Blade Length 600mm/700mm
Fuel tank capacity 580ml/530ml	Cutting Length 550mm/620mm
Ignition CDI	Fuel Use 1:25

Earth Augers

One-man auger with Quick stop drill brake . Suitable for a large variety of tasks form drilling simple holes in the ground to taking soil samples from the borehole. Framework padding is included .



Earth Auger

Superior-performance TMAXTOOL augers make your pole and fence installation jobs and tree planting jobs fast and easy.



TMD520-3 | TMD620-3 | TMD650-3



TMD520-1 | TMD620-1 | TMD650-1

TMD520-1 | TMD620-1 | TMD650-1
TMD520-3 | TMD620-3 | TMD650-3



Engine model 1E44F / 1E47.5F / 1E48F	Engine 2-stroke, air-cooled, 1-cylinder
Displacement 51.7cc / 62cc / 65cc	Max engine speed 9000±500rpm
Power 1.6KW / 2.1KW / 2.3KW	Fuel/Oil mixture ratio 25:1
Idling speed 3000±200rpm	Fuel tank capacity 1.2L

Earth Auger

- Mobile , robust , created specifically for professionals .
- Ideal for large areas that are usually hard to access .



TMD720-1

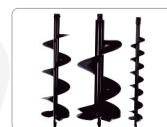


TMD720-3

TMD720-1 / TMD720-3



Engine model 1E50F	Engine 2-stroke, air-cooled, 1-cylinder
Displacement 72.6cc	Max engine speed 9000±500rpm
Power 2.5KW	Fuel/Oil mixture ratio 25:1
Idling speed 3000±200rpm	Fuel tank capacity 1.2L



Ground Drill Bits
80mm-300mm



Extension shaft



Replaceable
blade



Sharp cutting
blades



Special design and
dual cutting blade
allows for faster
drilling

A close-up, low-angle shot of a red and blue seeder machine in operation. The machine's metal frame and red engine housing are visible at the top. Below, a series of curved metal discs or blades are shown in motion, turning over dark, rich soil. The soil is being sown with seeds, which are visible as small dark specks. The foreground shows a mix of dark soil and dry, light-colored straw or grass. The background is a blurred field of similar vegetation. The overall scene is brightly lit, suggesting a sunny day.

Tiller

Seeder machine ,fast feed , fast
working , arable land and sowing
at same time .

Tillers

Seeder machine, fast feed ,fast working ,arable land and sowing at same time.



TMC520 | TMC620 | TMC650
TMC520-2 | TMC620-2 | TMC650-2



Engine 1.6kw/2.1kw/2.3KW	Working depth 15-20cm
Displacement 51.7cc/62cc/65cc	Working width 30cm/40cm
Ignition System C.D.I	N.W./G.W. 11kgs/13kgs 12kgs/14kgs
Fuel tank capacity 1.2L	Gear Rate 34:1

4
blades



TMC520 | TMC620 | TMC650

6
blades



TMC520-2 | TMC620-2 | TMC650-2

Tillers



TMC720

6
blades



TMC720-2



TMC720 / TMC720-2



Engine 2.5kw	Working depth 15-20cm
Displacement 72.6cc	Working width 30cm/40cm
Ignition System C.D.I	N.W./G.W. 13kgs/15kgs
Fuel tank capacity 1.2L	Gear Rate 34:1

BLOWERS

TMAXTOOL offers both backpack blowers with a professional capacity and lightweight handheld blowers for home use. They are easy to operate with high blowing capacity and bring the powerful & satisfying result.





Blowers

- Mobile , robust , created specifically for professionals .
- Ideal for large areas that are usually hard to access .



TMB260A



TMBV260A

TMB260A | TMBV260A



Engine 1E34F	Fuel tank capacity 450ml
Displacement 25.4cc	Discharge Liquid 15-114oz/min
Max Engine Power 0.75kw/7500rpm	Air velocity ≥41m/s
Fuel mix ratio 25:1~50:1	Air volume ≥0.2m³/s

Blowers



TMBV320



TMEB430

TMBV320 | TMEB430



Engine 1E40F-5A	Fuel tank capacity 500ml/1200ml
Displacement 30cc/42.7cc	Discharge Liquid 15-114oz/min
Max Engine Power 1.0kw 1.25KW/6800rpm	Air velocity 200km/h/≥47m/s
Fuel mix ratio 25:1~50:1	Air volume 10m³/min ≥0.25m³/s

Blowers

- TMAXTOOL offers both backpack blowers with a professional capacity and lightweight handheld blowers for home use.
- They are easy to operate with high blowing capacity and bring the powerful & satisfying result.



TMEB975



TMEB965A



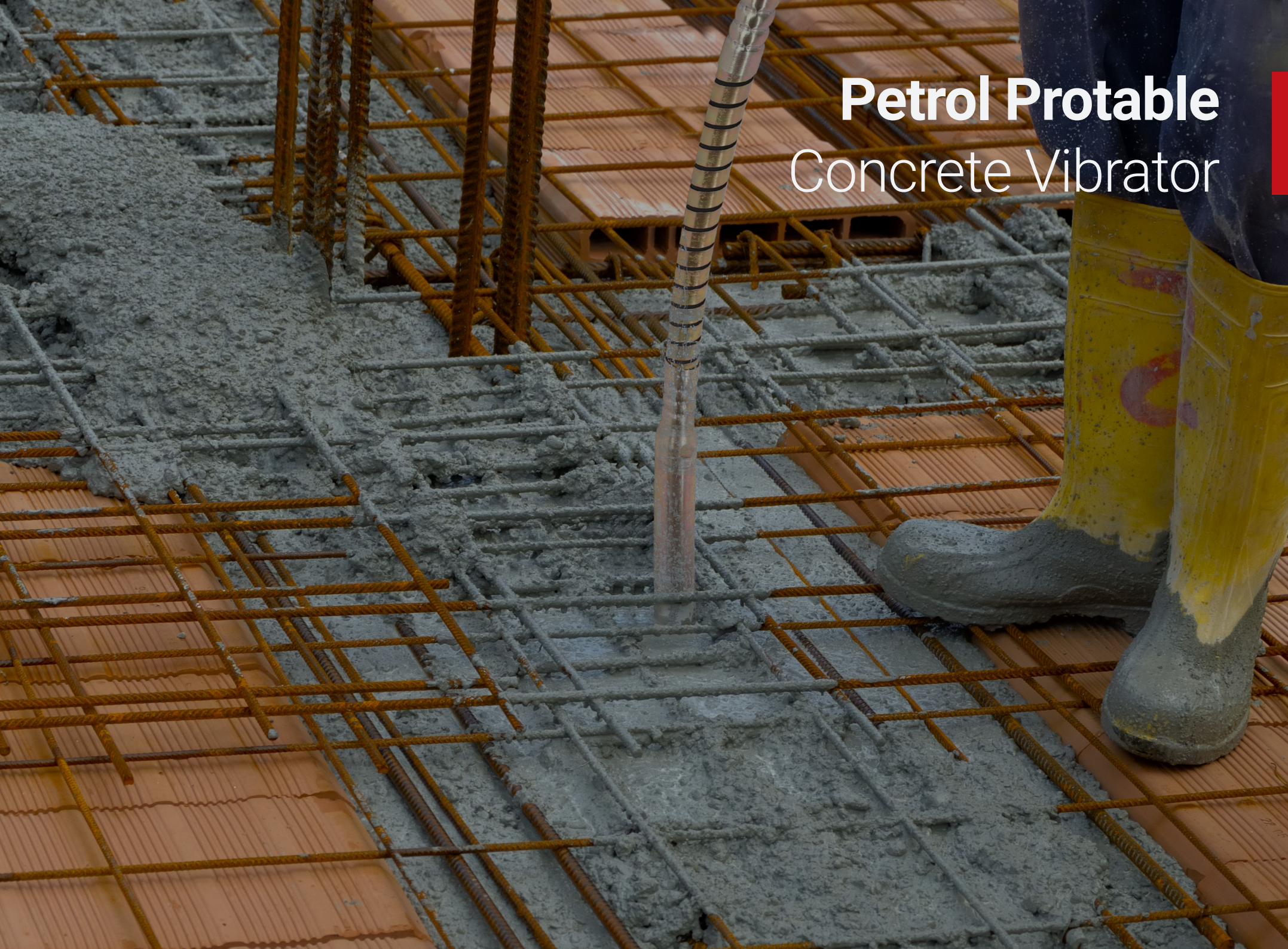
TMEB985

TMEB965A | TMEB975 | TMEB985



Displacement 63.3cc 63.3cc 75.6cc	Air volume 1440m³/h 1440m³/h 1728m³/h
Max Engine Power 2.7kw 2.7kw 3.7kw	Weight 9.5 10.5 10.5kg

Petrol Protable Concrete Vibrator



Petrol Protable Concrete Vibrator



TMCV520 | TMCV620 | TMCV650



TMCV520 | TMCV620 | TMCV650

Engine 1E44F 1E47.5F 1E48F	Belt Single belt
Displacement 51.7cc 62cc 65cc	Head diameter 45mm
Handle Loop handle	Head length 1m
Fuel tank capacity 1.1L	Weight 11kg



Petrol Protable Concrete Vibrator



TMCV720

TMCV720



Engine 1E50F	Belt Single belt
Displacement 72.6cc	Head diameter 45mm
Handle Loop handle	Head length 1m
Fuel tank capacity 1.1L	Weight 11kg

BRUSH CUTTER

ACCESSORIES

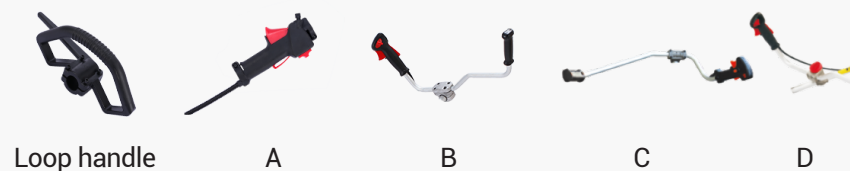
Trimmer head



Blade



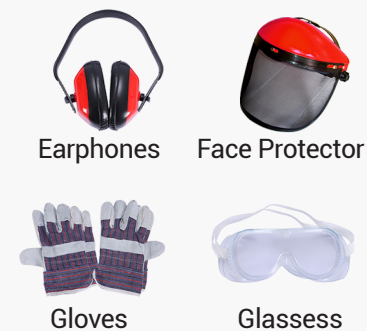
Handle for brush cutter



Guards



Safety kits



Belt



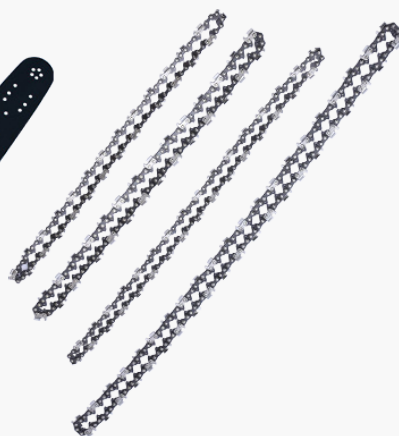
CHAINSAW

Accessories

Chainsaw accessories



Guide bar



Chain



Chain



Blow Case



Package



Handle Assy



Starter



Brake



Flywheel



Ignition



Crankshaft



Spark Plug



Carburetor-A



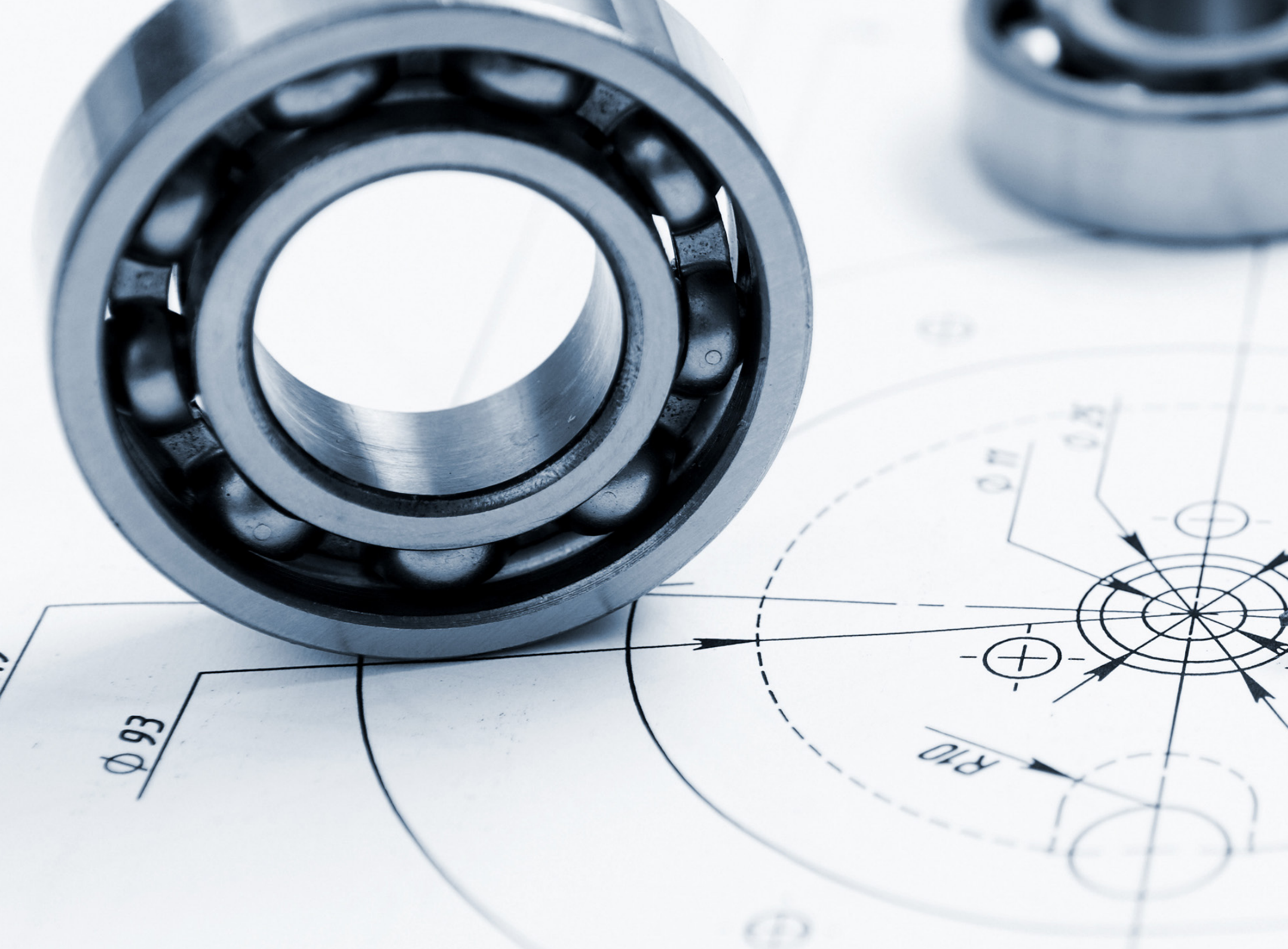
Carburetor-B



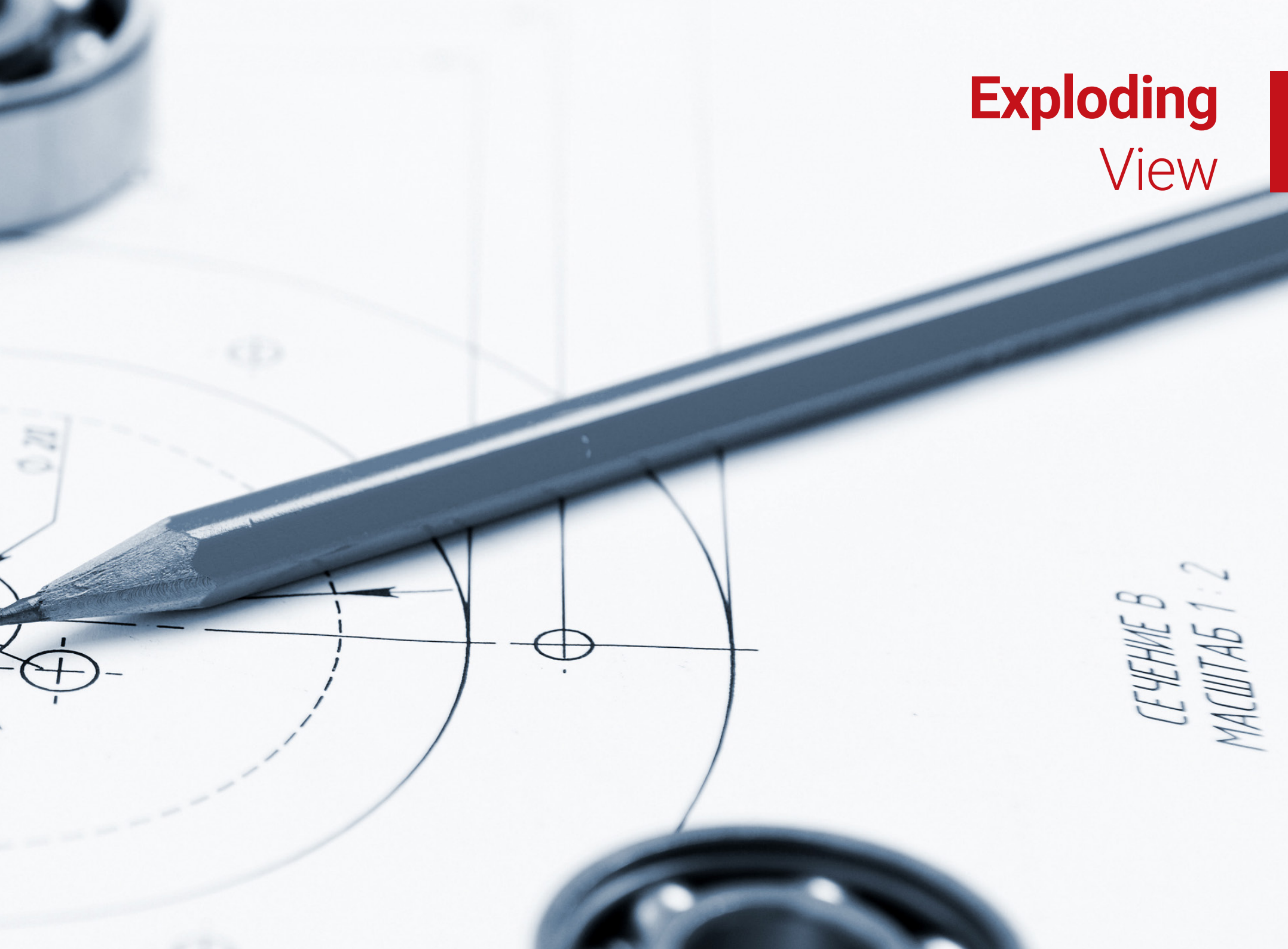
Cylinder



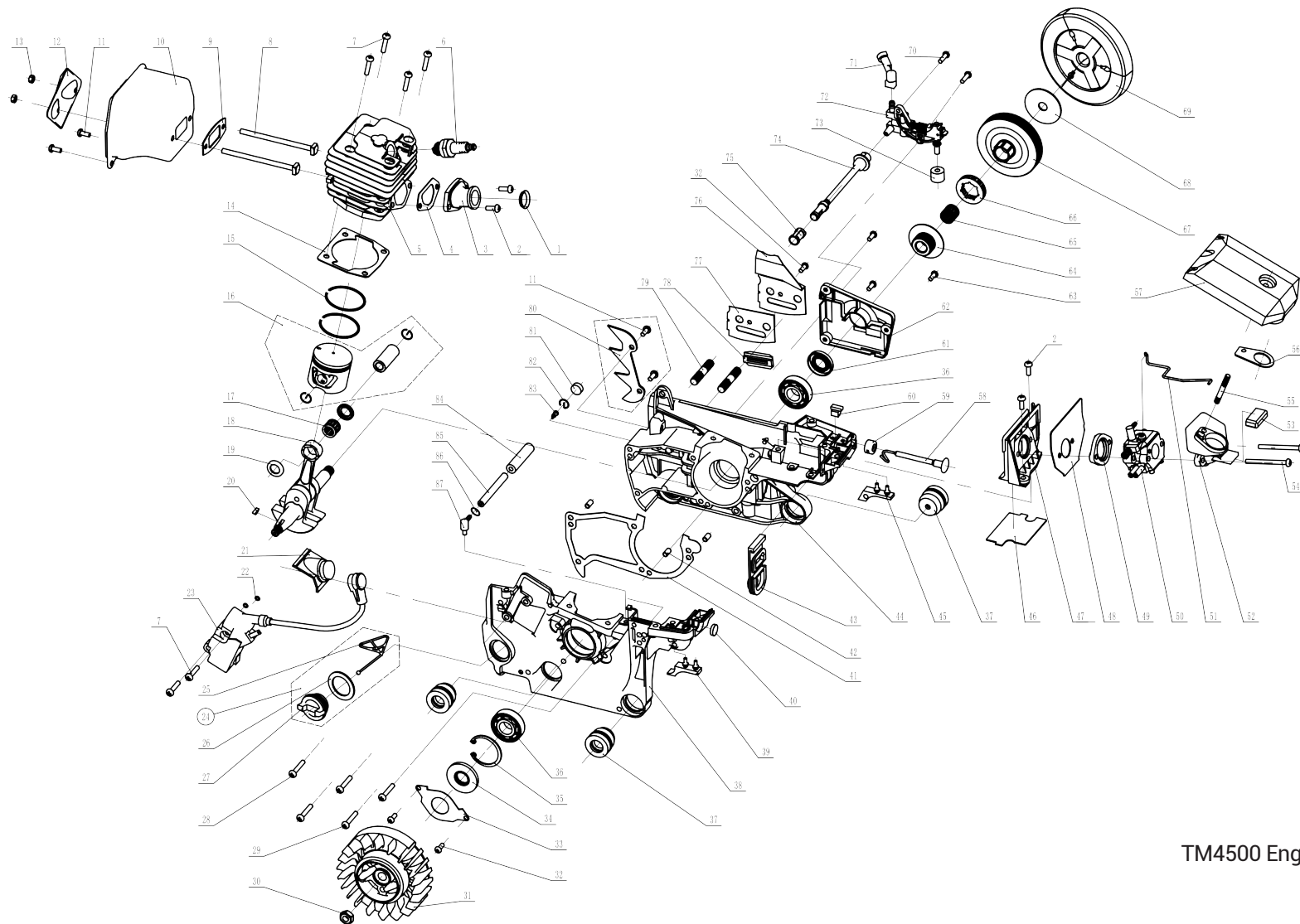
Piston



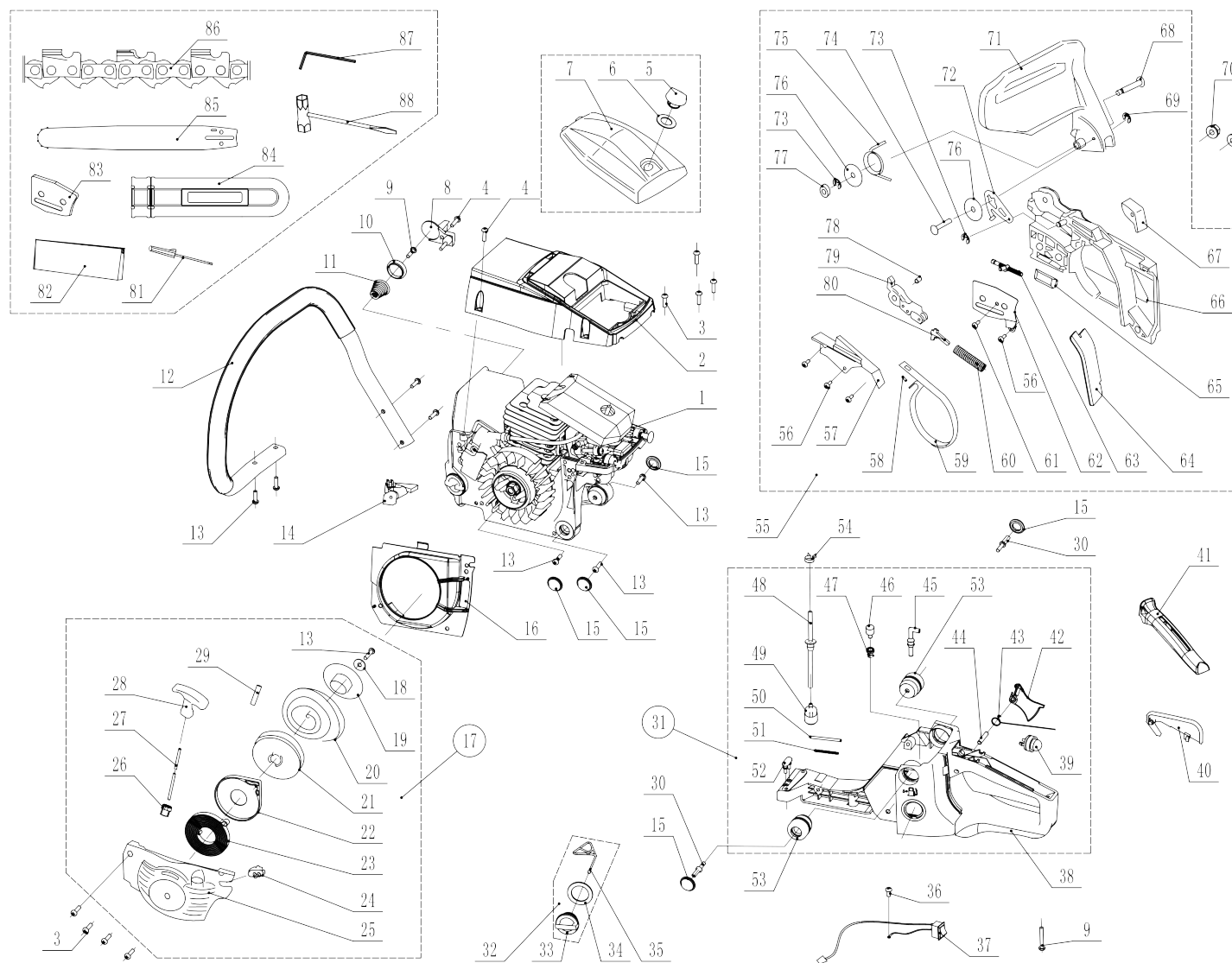
Exploding View



CHAINSAW ENGINE

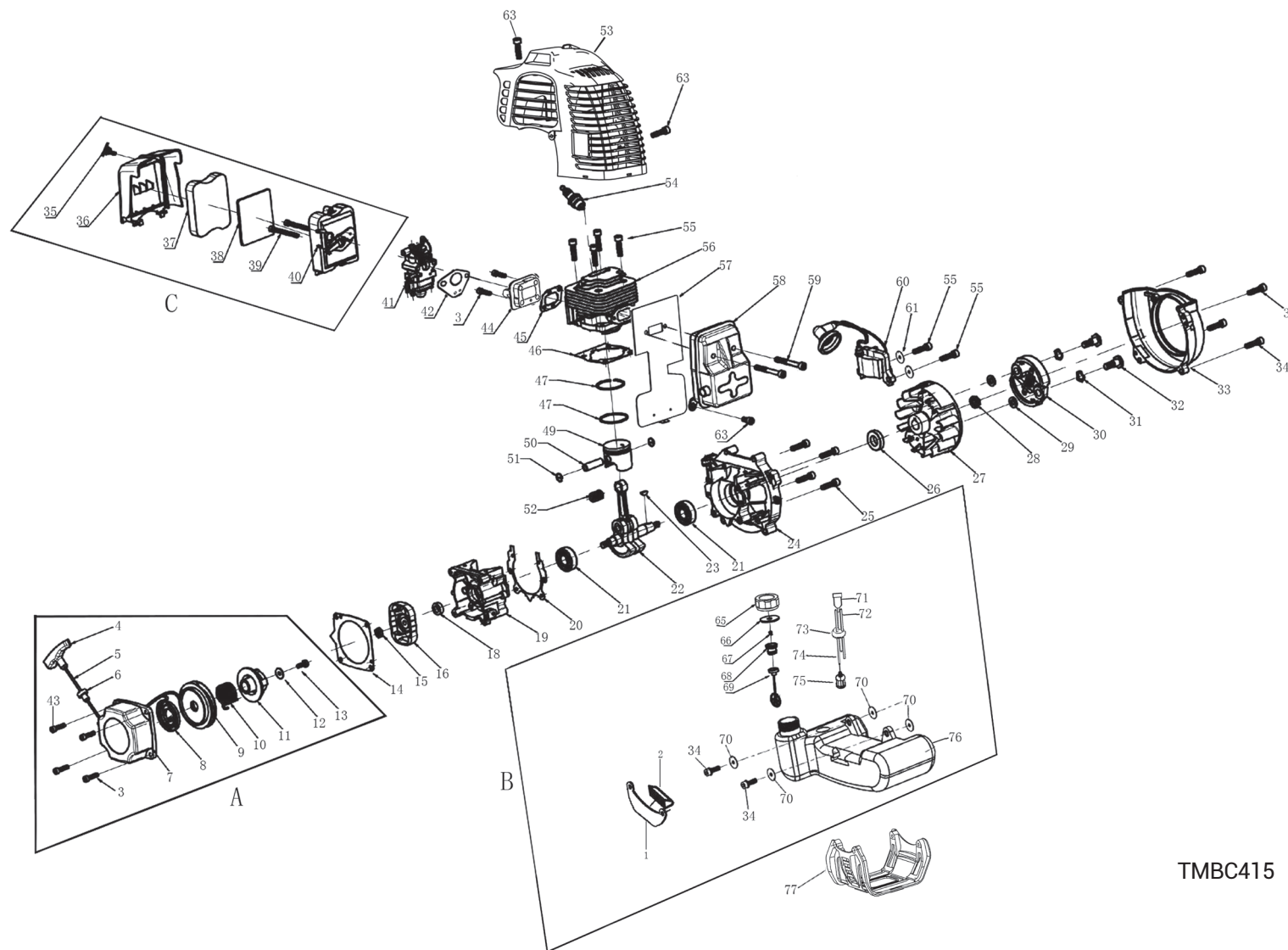


TM4500 Engine



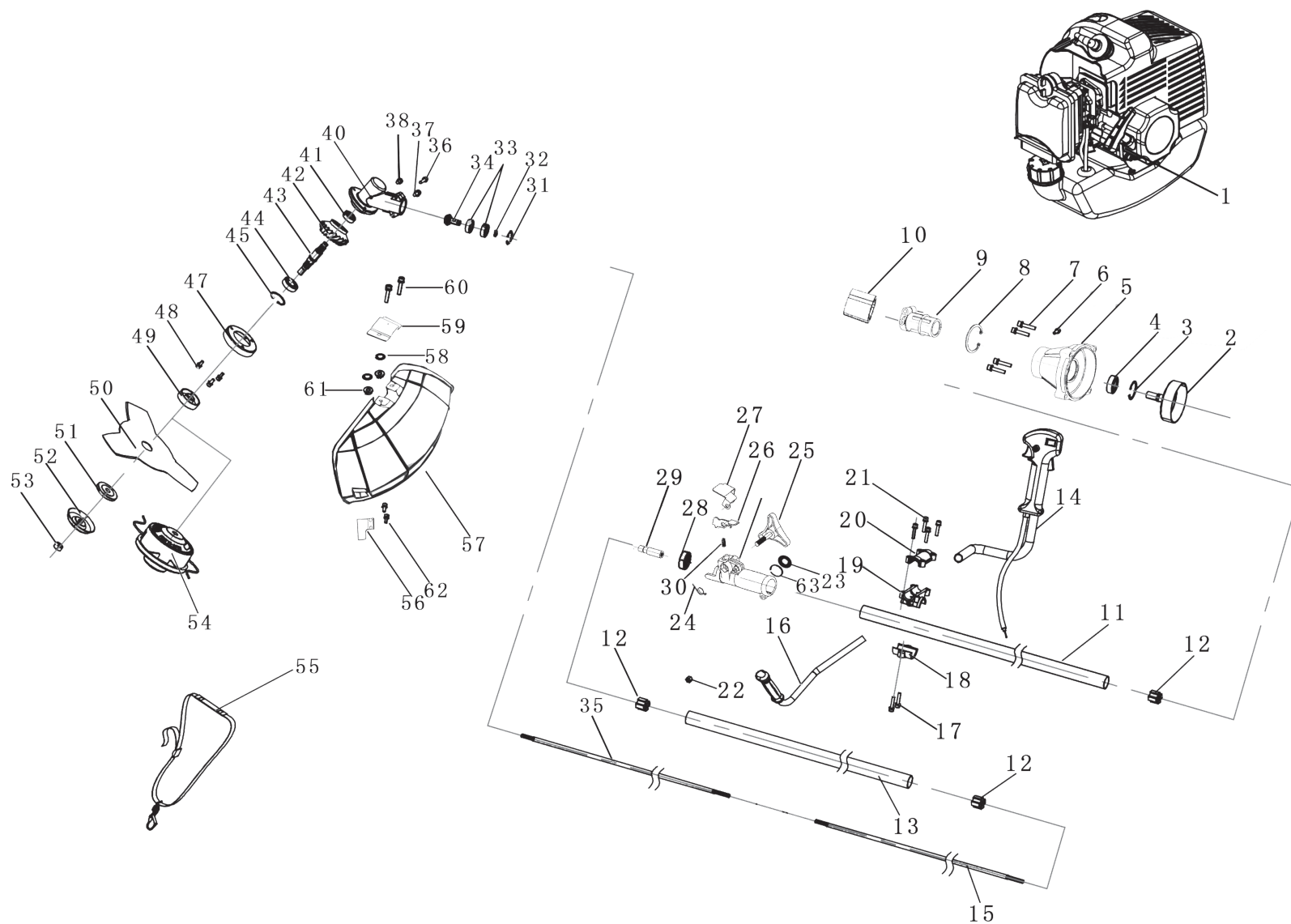
TM4500

BRUSH CUTTER ENGINE



TMBC415

BRUSH CUTTER





JINHUA TEAMMAX TOOL MANUFACTURE CO.,LTD.

T. +86-579-82923707 W. www.tmaxtool.com E. info@tmaxtool.com
ADD. No.17 Technology Park, Caozhai ,Jindong District, Jinhua City,Zhejiang,China.

